



Parliament and the Public

Knowledge, interest and perceptions

Susanna Kalitowski

New survey data provided by



About the author

Susanna Kalitowski is a research fellow on the Hansard Society's Parliament and Government Programme, where she conducts research on a variety of issues related to parliamentary and government reform, law-making and public engagement. Recent publications include *Audit of Political Engagement 5*, *Law in the Making: Influence and Change in the Legislative Process* and *No Overall Control? The Impact of a Hung Parliament on British Politics*.

Published by the Hansard Society, 40-43 Chancery Lane, London WC2A 1JA
Tel: 020 7438 1222. Fax: 020 7438 1229. Email: hansard@hansard.lse.ac.uk

All rights reserved. No part of this publication may be reproduced, stored in a retrieval system or transmitted in any form by any means, without the prior permission of the Hansard Society.

The views expressed in this publication are those of the authors. The Hansard Society, as an independent, non-party organisation, is happy to invite analysis and discussion of these views.

1.0 Introduction: what does the public think about Parliament?

The Westminster Parliament is the heart of representative democracy in the United Kingdom. Its own brand of parliamentary democracy, the 'Westminster system,' has been replicated around the world. The Palace of Westminster, with its iconic bell tower and dramatic position on the banks of the River Thames, is one of the most recognisable buildings on earth – an international symbol of the UK, as well as a physical embodiment of democracy.¹

But what do the British people think about the illustrious institution which represents them? There is evidence that public confidence in Parliament has been rapidly declining over the past several decades.² The Hansard Society's annual *Audit of Political Engagement* has recently found that only a third of the population is satisfied with how the institution works.³ In an effort to shed further light on the complex relationship between Parliament and the public, the Hansard Society commissioned a survey examining public attitudes towards the institution.⁴ This report presents our findings, which are grouped into three categories:

- **Knowledge and understanding** of how Parliament works and the distinction between Parliament and government;
- **Interest** in Parliament and the desire to know more about it;
- **Perceptions** of whether Parliament is important, relevant, accessible, representative and is generally working for people.

Key findings

The results of the survey reveal strikingly low levels of knowledge about Parliament as well as some surprising perceptions about its role as an institution. The key findings include:

- Just 32% of people agree that they 'have a good understanding of the way Parliament works';
- Only one in two members of the public are confident that Parliament is not the same thing as government;
- Over half of people (53%) have an interest in Parliament, although nearly as many (47%) have little or no interest;
- Around one in two (47%) are interested in learning more about Parliament;
- Younger people (aged 18-34) and women are more likely to want to know more about Parliament, while people from lower social grades are far more likely to say they would not like to know more;
- Nearly half of people agree that Parliament undertakes important functions that no other body can undertake and a majority feel it is relevant to their lives;
- An overwhelming majority of people feel that that Parliament is unrepresentative of British society;
- Only 19% of people agree that Parliament is 'working for them'.

Some of these findings – particularly vis-à-vis knowledge and understanding – are

¹ Winston Churchill dubbed the House of Commons the 'shrine of the world's liberties'. Winston Churchill quoted in P. Hennessy, 'An end to the poverty of aspiration? Parliament since 1979', unpublished paper, November 2004, p. 23.

² For example, MORI research found that trust in Parliament dropped from 54% in 1983 to 14% in 2000. See M. Woolf, 'Cameron launches taskforce to "restore trust in politics"', *The Independent*, 5 February 2006.

³ Hansard Society & Electoral Commission (2007), *An audit of political engagement 4* (London: Hansard Society and Electoral Commission), p. 7.

⁴ This publication is based upon a Hansard Society report for the Group for Information to the Public (GIP) of the Houses of Parliament, *Removing Barriers to Engagement*. The Hansard Society commissioned ComRes to poll 1023 UK adults by telephone between 4 and 5 June 2008. The data was weighted to represent the national distribution by age, region and gender.

unquestionably troubling. On a more positive note, others suggest that, contrary to popular belief, most people are not completely apathetic about Parliament. A majority of the public appear to have an interest in and a high regard for the institution even if it does not currently live up to their expectations and ideals.

2.0 Knowledge and understanding

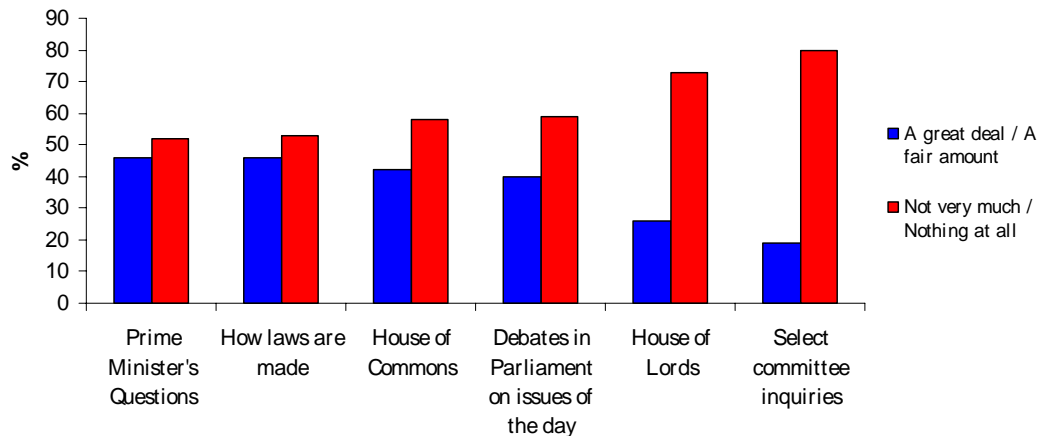
Just 32% of the public say that they feel they 'have a good understanding of the way Parliament works'. A much smaller proportion say that they know about the House of Lords (26%) than the House of Commons (42%). The two components of Parliament's work with which the public feel most familiar are Prime Minister's Questions and how laws are made, with 46% saying that they know either 'a great deal' or 'a fair amount'. Only half of the public appear to be able to distinguish between government and Parliament. Even among those who recognise that they are separate entities, there is confusion as to exactly what that difference is.

2.1 Knowledge of Parliament

Past Hansard Society studies have identified a lack of knowledge about politics as one of the most important barriers to engagement between the public and the political system, including Parliament.⁵ In this survey, we asked people whether they agree with the statement 'I feel I have a good understanding of the way Parliament works'. Only 32% of people tend to agree. This is significantly less than the number of people to who claim to know about politics as a whole (55%).

In view of the prevailing ignorance, it is not surprising that there is widespread confusion about Parliament's day-to-day work. People were asked to what extent they knew about six components of Parliament: the House of Commons, the House of Lords, Prime Minister's Questions, how laws are made, debates on issues of the day and select committee inquiries. The majority say that they know either 'not very much' or 'nothing at all' about any of these components.

Figure 1: Knowledge of six components of Parliament



Base: all respondents

⁵ See Hansard Society & Electoral Commission (2007), *An audit of political engagement 4* (London: Hansard Society & Electoral Commission); Hansard Society (2008), *Audit of Political Engagement 5* (London: Hansard Society).

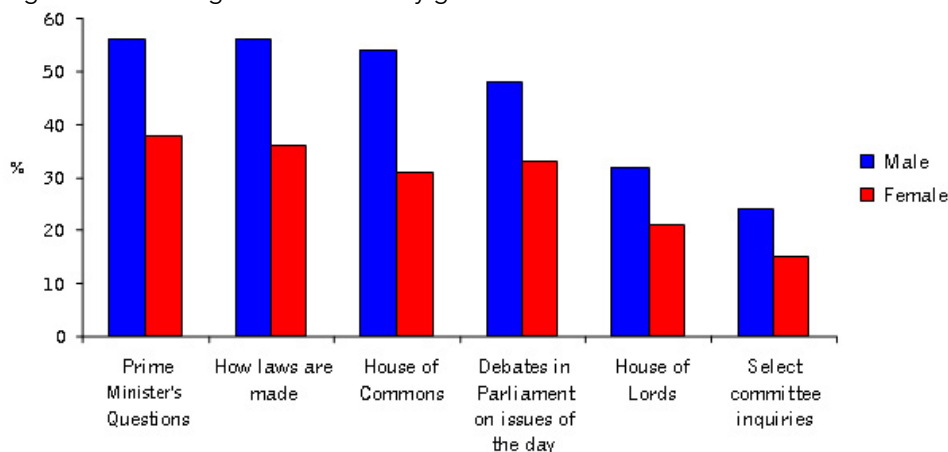
A much smaller proportion of the public feel that they have at least a fair amount of knowledge about the House of Lords (26%) than the House of Commons (42%). The two components of Parliament's work with which the public feel most familiar are 'Prime Minister's Questions' and 'how laws are made', with 46% saying that they know either 'a great deal' or 'a fair amount' in both cases (14% more than the number of people who feel they understand how Parliament as a whole works).

The least well-known components are 'select committee inquiries', with 80% of the public saying that they know either 'not very much' or 'nothing at all' about this aspect of Parliament's work.

Gender

There is a marked contrast in the professed knowledge of men and women. While 42% of men agree with the statement 'I feel I have a good understanding of the way Parliament works', only 24% of women agree. And while nearly half of women (49%) disagree with the statement, only 29% of men do. Roughly equal numbers of men and women – a little over a quarter – neither agree nor disagree. In general, men are more likely to believe that they know about the six tested parliamentary components than women. The most striking disparity is with respect to the House of Commons. While 54% of men say that they know either 'a fair amount' or 'a great deal' about the House of Commons, just 31% of women say the same.

Figure 2: Knowledge of Parliament by gender



Base: all respondents

Age and social grade

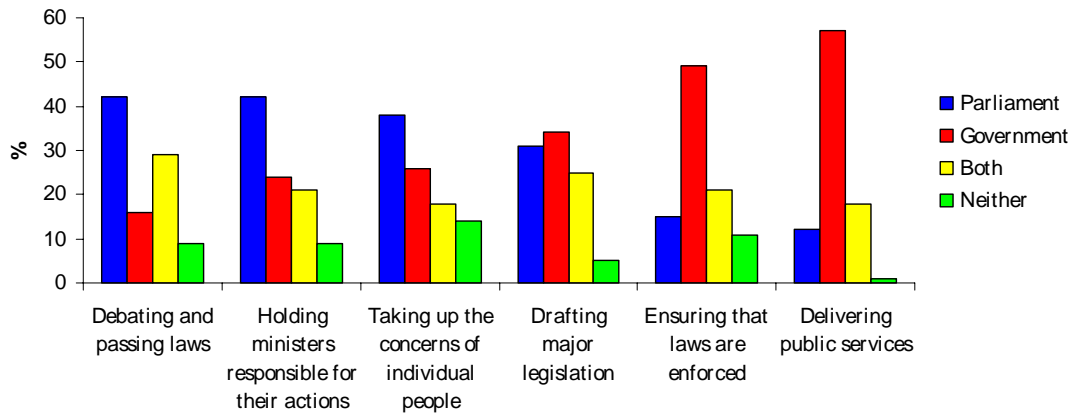
Age and social grade⁶ differences are also present, with older people (65+) and higher social grades more likely to have a good understanding of Parliament and its components.

2.2 Understanding the distinction between government and Parliament

In order to test the public's understanding of the distinction between government and Parliament, people were asked whether they agreed with the statement that 'government and Parliament are the same thing'. Only 49% disagree with this statement, suggesting that one in two members of the public are not confident that there is a difference. Those who correctly identified the distinction were then asked to categorise functions according to whether they considered them to be the responsibility of government, Parliament or both.

⁶ For an explanation of social grade definitions, see Appendix A.

Figure 3: Understanding of the different functions of government and Parliament



Base: all who say there is a difference between government and Parliament

Functions most popularly associated with Parliament are ‘debating and passing laws’ (42%); ‘holding ministers responsible for their actions’ (42%); and ‘taking up the concerns of individual people’ (38%).

The functions most widely associated with government are ‘delivering public services’ (57%) and ‘ensuring that laws are enforced’ (49%). The public are divided about who has responsibility for ‘drafting major legislation’, with 34% saying it is government’s role and 31% saying that it is Parliament’s role.

Gender

Men and women are roughly just as likely to say that there is a difference between government and Parliament. However, men are more likely than women to correctly identify the roles of government and Parliament: more men than women associate ‘debating and passing laws’ with Parliament (48% versus 37%); ‘holding ministers responsible for their actions’ with Parliament (48% versus 37%); ‘ensuring that laws are enforced’ with government (53% versus 47%); ‘taking up the concerns of individual people’ with Parliament (42% versus 34%); and ‘drafting major legislation’ with government (36% versus 32%). The one measure on which women appear to have a more accurate view than men is ‘delivering public services’, with more women than men (59% versus 55%) associating this function with government.

Age and social grade

People from higher social grades are more likely than people from lower grades to disagree strongly with the statement that ‘Government and Parliament are the same thing’ (33% of ABs and 28% of C1s disagree strongly compared to 23% of DEs and 21% of C2s). They are also more likely to correctly identify which functions correspond with Parliament and which correspond with government. For example, 55% of ABs associate ‘holding ministers responsible for their actions’ with Parliament, compared to 42% overall.

A perhaps unexpected age difference emerges, with people aged 25-34 also disproportionately more likely to correctly ascribe parliamentary and governmental functions. For example, 67% of ABs and 63% of 25-34 year-olds relate ‘delivering public services’ to government compared to the overall average of 57%; 55% of ABs and 51% of 25-34 year-olds associate ‘debating and passing laws’ with Parliament compared to 42% overall. Sometimes 25-34 year-olds fare better than ABs, with 67% correlating ‘ensuring that laws are enforced’ with government, compared to 49% overall - and only 57% of ABs. While

44% of this age group associates 'drafting major legislation' with government, only 37% of ABs do the same and the overall average is 34%.

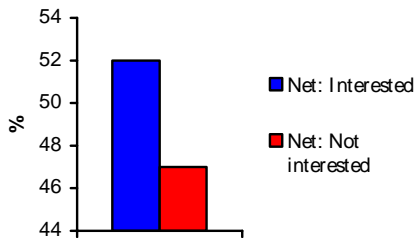
3.0 Interest

Over half (53%) of people have an interest in Parliament, although nearly as many (47%) have little or no interest. Around one in two people (47%) say either 'yes' or 'possibly' to the prospect of knowing more about Parliament. Younger people (aged 18-34) are more likely to say they want to know more than people over 35.

3.1 Overall interest in Parliament

Over the years, polls have consistently shown that only around half of the population professes to be interested in politics.⁷ This survey reveals that around the same amount of people are interested in Parliament – 53%. However, nearly as many – 47% – claim they have little or no interest in the institution.

Figure 4: Interest in Parliament



Base: all respondents

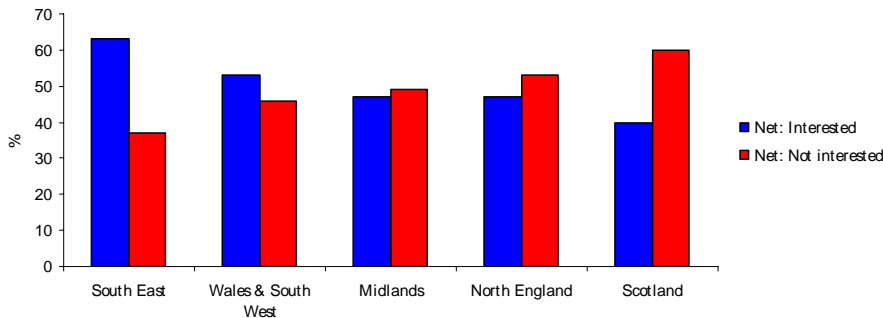
Net interested: respondents saying either 'fairly interested' or 'very interested'

Net not Interested: respondents saying either 'not very interested' or 'not at all interested'

Gender and region

More men than women claim they are interested in Parliament (55% versus 50%). Geographical location also plays a role.

Figure 5: Interest in Parliament by region



Base: all respondents

Net interested: respondents saying either 'fairly interested' or 'very interested'

Net not Interested: respondents saying either 'not very interested' or 'not at all interested'

⁷ Hansard Society (2008), *Audit of Political Engagement 5* (London: Hansard Society), p.13.

The above chart highlights that interest in Parliament correlates with people’s distance from Westminster. Six in 10 people based in the South East (63%) are interested in Parliament. In contrast, people based in Scotland have the lowest interest (40%) and highest lack of interest (60%) in the UK. This may be due to the possibility that those based in Scotland feel more affinity with the Scottish Parliament than the Westminster Parliament.⁸

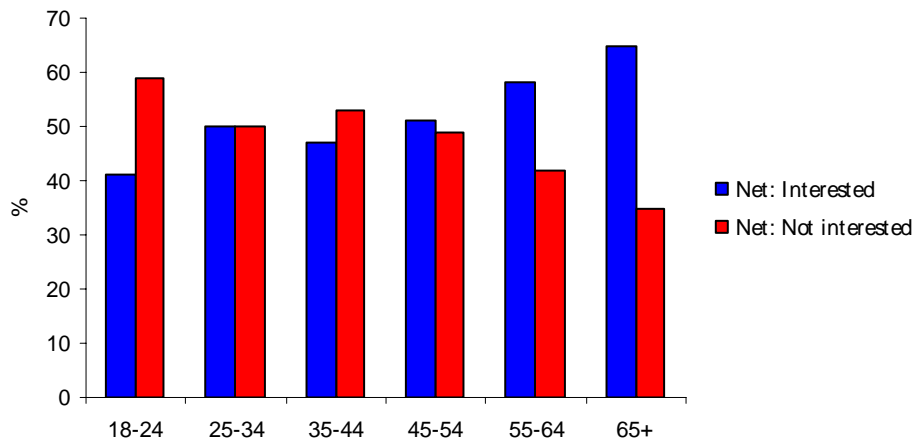
Social grade

When broken down by social grade, the results show that those in the highest social grades (AB) have the greatest level of interest in Parliament (65% compared to 53% overall). Interest gradually diminishes through grades C1 (55%) down to C2 (39%). Interestingly, DEs have a greater interest (47%) than C2s. As a disproportionate number of ABs live in the South East, it is possible that the regional disparity in interest is primarily reflecting regional economic discrepancies.

Age

Older age groups have a greater interest in Parliament. Indeed, interest appears to increase proportionally with age. Those aged 65+ are most likely to express interest in Parliament, at 65%. The lowest level of interest occurs within the 18-24 age group, at 41%. Those aged 25-34 appear to be equally as likely as those aged 35-44 to express an interest in Parliament, around one in two (50% and 47% respectively).

Figure 6: Interest in Parliament by age



Base: all respondents

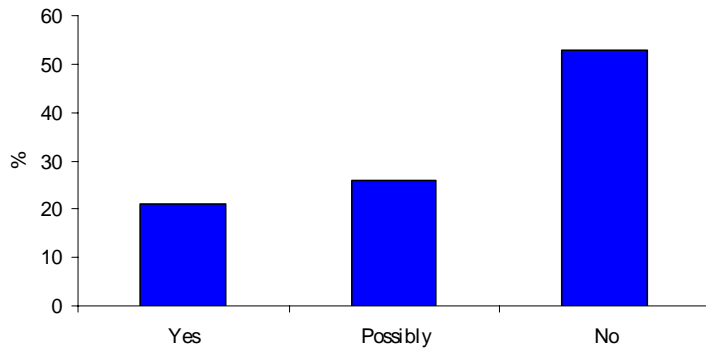
It is difficult to say from these figures alone whether this trend is indicative of a broad cultural change whereby today’s younger generation is destined to be less interested in politics than their predecessors (regardless of age), or whether it demonstrates that as people age, they are more likely to be interested in politics.

3.2 Desire to know more about Parliament

People were asked whether they would like to know more about what happens in the Westminster Parliament.

⁸ As the results for Wales are grouped with the South West, it is impossible to know if the same holds true for the Welsh Assembly; 53% of people in Wales and the South West are interested in Parliament.

Figure 7: Desire to know more about Parliament



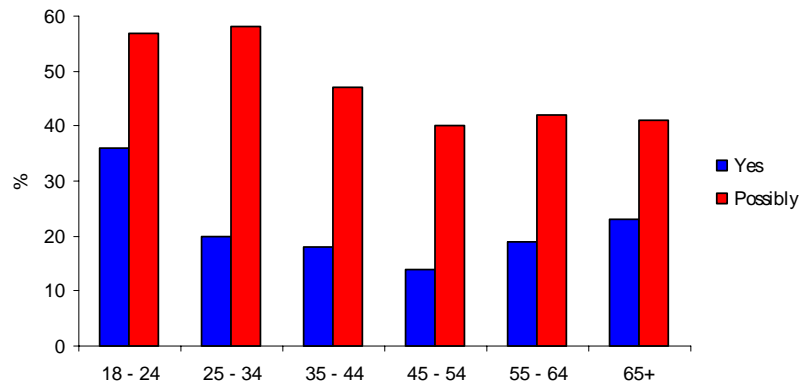
Base: all respondents

Around one in two of the population (47%) say 'yes' or 'possibly' to the prospect of learning more. This roughly corresponds with the aforementioned finding that 53% of respondents say that they are either very or fairly interested in Parliament. However 53% say that they would *not* like to know more about what happens in Parliament. It is possible that this group includes some people who are interested in the Westminster Parliament and feel that they already know enough.

Age

People aged 18-34 – who tend to say they know less about Parliament – are more likely to want to know more about what happens in Parliament than people over 35.

Figure 8: Desire to know more about Parliament by age



Base: all respondents

This finding is particularly interesting when contrasted with interest in Parliament by age (see 3.1). Whereas 65% of people aged 65+ say that they are interested in Parliament, only 41% say that they would like to know more. By contrast, whereas only 41% of 18-24 year-olds claim that they are interested in Parliament, 57% would like to know more. More of this group answer 'yes' to the question than any other age group (36% versus 21% overall). These findings suggest that there is a real desire among 18-24 year-olds to know more about Parliament, even among some who would consider themselves uninterested.

Gender

More women than men (49% versus 44%) say they would like to know more about

Parliament, despite the fact that more men than women (55% versus 50%) say they are interested in Parliament.

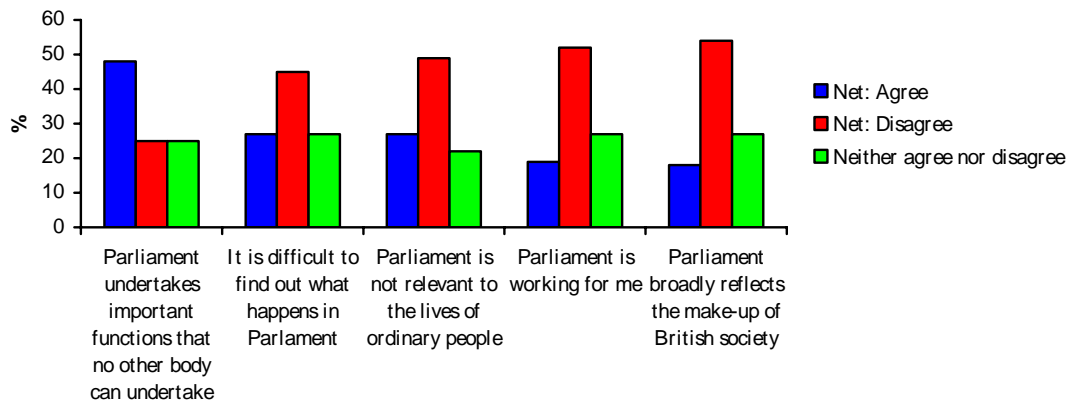
Social grade and region

People from lower social grades are markedly less interested in the prospect of learning more about what happens in Parliament: 63% of DEs said they would not like to know more compared to 53% overall and 48% of ABs. Residents of Wales and the South West are also more likely to say they do not wish to learn more (61% versus 53% overall), possibly reflecting the fact that the lower social grades are disproportionately represented in these regions.

4.0 Perceptions

Nearly half of people agree that Parliament undertakes important functions that no other body can undertake and most people feel it is relevant to their lives. However there is a widespread perception that Parliament is not representative of the public and just 19% agree that Parliament is ‘working for them’.

Figure 9: Perceptions of Parliament



Base: all respondents
 Net agree: agree strongly or disagree
 Net disagree: disagree strongly or disagree

4.1 Importance

People were asked to what extent they agree with the statement that ‘Parliament undertakes important functions that no other body can undertake’. Nearly half of the public (48%) agree. A quarter of people disagree and another quarter is neutral.

There is striking gender divide, with men far more likely to agree with the statement than women (56% versus 40%). The oldest respondents (65+) are also more likely to agree (50%) than 18-24 year-olds (38%). An average of 55% of the top grades (ABs and C1s) agree compared to 39% of the lower grades (C2s and DEs). People in Scotland are 10 percentage points less likely to agree than people from other regions (38% compared to 48%).

4.2 Relevance

Parliament is regarded as fairly relevant to the lives of most people. Nearly half of people (49%) disagree with the statement that 'Parliament is *not* relevant to the lives of ordinary people'. While 27% agree with the statement, 22% neither agree nor disagree.

Those who are more likely to disagree with the statement include young people (22% of 18-24 year-olds), ABs and people from the South East (both 21%). People from Scotland are most likely to disagree strongly (39% compared to 29% overall).

The groups that are more likely to agree with the statement are people aged 65+ (33%), people from lower social grades (around 32%), and people from the North (33%). Middle aged people (aged 55-64) are most likely to agree strongly with the statement (22% compared to 14% overall).

4.3 Accessibility

When asked whether they agree with the statement that 'it is difficult to find out what happens in Parliament', just under a half of people (45%) disagree. On the other hand, a little over a quarter (27%) agree with the statement and another 27% are neutral.

There are few significant demographic differences, although people from the lowest social grades are more likely to agree (33% compared to 21% of ABs and 27% overall). DEs and people from Scotland are most likely to say they agree strongly (21% versus 14% overall).

Our past research suggests that most people are not willing to pro-actively seek information about Parliament and are almost totally reliant on what they see on television or read in the newspapers for information.⁹ The Hansard Society has frequently stressed the importance of making information about Parliament easily accessible to the public.¹⁰

4.4 Efficacy

Only 19% of the public agree with the statement 'Parliament is working for me', while over half – 52% – disagree. Around a quarter (27%) neither agrees nor disagrees.

Those who are most likely to agree with the statement are people aged 65+. They are also most likely to agree strongly (13% compared to 8% overall).

People most likely to disagree with the statement include those from Scotland (64%), DEs (61%) and those aged 35-44 (60%). DEs are most likely to disagree strongly (38% compared to 28% overall). Interestingly, young people are *less* likely to disagree (37%).

4.5 Representativeness

Over half of the population (54%) disagrees with the statement 'Parliament broadly reflects the make-up of British society', accurately reflecting the under-representation of women and ethnic minority groups at Westminster. Only 18% agree with the statement and a little over a quarter (27%) are neutral.

⁹ V. Ram (2005), *Enhancing Engagement: What people think, know and expect of Parliament* (London: Hansard Society), p. 31.

¹⁰ See Hansard Society (2005), *Report of the Hansard Society Commission on the Communication of Parliamentary Democracy, Members Only? Parliament in the Public Eye* (London: Hansard Society).

Given the content of the question, it is striking that it produced fewer demographic cleavages than many of the other questions asked in this survey. For example, there is little difference in the responses of men and women despite the fact that less than 20% of MPs are female. However, people from the lower social grades are more likely to agree strongly (12% of DEs versus 4% of ABs and 8% overall) and disagree strongly (35% of DEs versus 30% of ABs and 30% overall).¹¹

5.0 Conclusion: important but not working?

Large numbers of the population – around two thirds – do not feel they have a good understanding of how Parliament works. In fact, only half recognise that Parliament and government are not the same entity. Fortunately, interest in Parliament is higher than knowledge, with around half of the public claiming they are interested in Parliament and would potentially like to know more about its work.

The same familiar demographic differences which have turned up in past polls about political engagement appear in this survey, with men, older people (65+), people from higher social grades (ABs), and people from the South East all disproportionately likely to be both knowledgeable about and interested in Parliament.

However, the desire to know more about Parliament is not always linked to knowledge and interest, as women and younger people are more likely to want to know more than men and older people. People from lower social grades, however, are much less likely to want to know more.

In examining people's perceptions of Parliament's importance, relevance, efficacy representativeness and accessibility, some light is shed on the reasons for the relatively low levels of interest in the institution. Given that 52% of people disagree that 'Parliament is working for me', and 54% do not believe Parliament is representative of the British public, it is perhaps not surprising that 53% say that they are not interested in Parliament.

Nevertheless, nearly half of people (48%) agree that Parliament performs important functions that no other body can undertake.¹² Similarly, half disagree that it is irrelevant to the lives of ordinary people. Younger people are more likely to agree that Parliament is both important and relevant to their lives than older people.

Parliament is held in high regard by at least half of the population, but most people are disconnected from the institution and do not feel it works for them. The survey findings suggest that Parliament is viewed by the public less as a medium for participatory government and more as a necessary part of non-participatory government.

¹¹ The survey results cannot be broken down by race or ethnicity.

¹² Elsewhere, we have found that the overwhelming majority of people – 75% – agree that a strong Parliament is good for democracy. See Hansard Society (2008), *Audit of Political Engagement 5* (London: Hansard Society), p.33-4.

References

Hansard Society (2004), *Connecting Communities with Parliament*.

Hansard Society & Electoral Commission (2007), *An audit of political engagement 4* (London: Hansard Society & Electoral Commission).

Hansard Society (2008), *Audit of Political Engagement 5* (London: Hansard Society).

Hansard Society (2005), *Members Only? Parliament in the Public Eye*, Report of the Hansard Society Commission on the Communication of Parliamentary Democracy (London: Hansard Society).

P. Hennessy, 'An end to the poverty of aspiration? Parliament since 1979', unpublished paper, November 2004.

V. Ram (2005), *Enhancing Engagement: what people think, know and expect of Parliament* (London: Hansard Society).

M. Woolf, 'Cameron launches taskforce to "restore trust in politics"', *The Independent*, 5 February 2006.

Appendix A

Guide to social grade definitions

The table below contains a brief list of social grade definitions as used by the Institute of Practitioners in Advertising.

Grade	Definition
A	Professionals such as doctors, surgeons, solicitors or dentists; chartered people like architects; fully qualified people with a large degree of responsibility such as senior editors, senior civil servants, town clerks, senior business executives and managers, and high ranking grades of the Services.
B	People with very responsible jobs such as university lecturers, hospital matrons, heads of local government departments, middle management in business, qualified scientists, bank managers, police inspectors, and upper grades of the Services.
C1	All others doing non-manual jobs; nurses, technicians, pharmacists, salesmen, publicans, people in clerical positions, police sergeants/constables, and middle ranks of the Services.
C2	Skilled manual workers/craftsmen who have served apprenticeships; foremen, manual workers with special qualifications such as long distance lorry drivers, security officers, and lower grades of Services.
D	Semi-skilled and unskilled manual workers, including labourers and mates of occupations in the C2 grade and people serving apprenticeships; machine minders, farm labourers, bus and railway conductors, laboratory assistants, postmen, door-to-door and van salesmen.
E	Those on lowest levels of subsistence including pensioners, casual workers, and others with minimum levels of income.

Hansard Society

The Hansard Society is the UK's leading independent, non-partisan political research and education charity. We aim to strengthen parliamentary democracy and encourage greater public involvement in politics.

President: Rt Hon Michael Martin MP, Speaker of the House of Commons.

Vice Presidents: Rt Hon Gordon Brown MP, Rt Hon David Cameron MP, Rt Hon Nick Clegg MP.

Council: Peter Riddell (Chair), Kate Jenkins (Vice Chair), Andrew Lansley CBE MP (Vice Chair), Lord Puttnam of Queensgate CBE (Vice Chair), Lord Tyler (Vice Chair), John Sharkey (Hon Treasurer), Roshana Arasaratnam (Asst Hon Treasurer). Richard Allan, Dianne Bevan, John Bercow MP, Rob Clements, Mark D'Arcy, Hilton Dawson, Paul Evans, Prof Ivor Gaber, Oonagh Gay, Elinor Goodman, Gavin Grant, Andy Hamflett, Prof Robert Hazell, Sheena McDonald, Joyce McMillan, Floyd Millen, Austin Mitchell MP, Jan Newton, Prof Lord Norton of Louth, Gerald Shamash.

The Hansard Society has five main programmes of work: Citizenship Education, Parliament and Government, eDemocracy, Study and Scholars and Hansard Society Scotland. The Hansard Society also produces the well-established academic quarterly *Parliamentary Affairs* in association with Oxford University Press.

As a registered charity, the Hansard Society relies on funding from individual donations, grants from charitable trusts and foundations, corporate sponsorship, and donations from individual parliamentarians from Westminster and the devolved institutions who contribute to our Parliamentary Patrons scheme. Our network of members and supporters come from all major political parties and from the public, private and third sectors. Those who support and work with us do so because we are independent and non-partisan, and our projects and programmes of work have genuinely made a difference to the democratic processes in the UK and beyond.

Recently, Hansard Society projects have been funded by BBC Parliament, Binks Trust, BT, Channel 4, Department for Children, Schools and Families, Educational Institute of Scotland, the Electoral Commission, Foreign and Commonwealth Office, House of Commons, House of Lords, Joseph Rowntree Charitable Trust, Learning and Teaching Scotland, the Lord Speaker, Ministry of Justice, McGrigors Public Policy, Nuffield Foundation, Open Society Foundation, Scotland Office, Standard Life, Tay Trust and UK Office of the European Parliament.

The work of the Hansard Society is supported by Bircham Dyson Bell LLP, BP International, ComRes, Corporation of London, Ellwood & Atfield, E.ON UK, IBM UK Ltd, the Law Society of Scotland, McGrigors LLP, MBDA, the National Assembly for Wales, National Grid, PricewaterhouseCoopers LLP, Scottish Enterprise, the Scottish Parliament, and Zurich Financial Services.

For further information visit our website at www.hansardsociety.org.uk

Poll

CATI Fieldwork : June 4th-5th 2008

Absolutes/col percents

Table 1

Q1. How interested or otherwise would you say you are in the UK Parliament in Westminster?**Base: All respondents**

	Gender			Age						Social Class				Region				
	Total	Male	Female	18-24	25-34	35-44	45-54	55-64	65+	AB	C1	C2	DE	South East	Mid-lands	North Eng-land	Wales & South West	Scot-land
Unweighted base	1023	461	562	74	122	203	199	215	210	327	235	164	297	268	265	254	146	90
Weighted base	1023	491	532	122	162	203	172	152	213	266	297	215	245	268	268	253	144	90
Net: Interested	538	271	267	49	80	95	87	88	138	174	165	84	116	169	138	119	77	36
	53%	55%	50%	41%	50%	47%	51%	58%	65%	65%	55%	39%	47%	63%	51%	47%	53%	40%
Very interested	(2) 148	86	63	6	17	21	18	29	56	53	50	13	32	49	28	39	25	7
	14%	17%	12%	5%	10%	10%	11%	19%	27%	20%	17%	6%	13%	18%	11%	15%	17%	8%
Fairly interested	(1) 389	185	204	43	64	74	69	58	82	121	114	70	84	120	110	80	52	29
	38%	38%	38%	35%	39%	37%	40%	38%	38%	45%	39%	33%	34%	45%	41%	31%	36%	32%
Not very interested	274	113	160	39	48	57	51	36	44	62	74	74	64	60	71	76	36	31
	(-1) 27%	23%	30%	32%	29%	28%	29%	24%	21%	23%	25%	34%	26%	22%	26%	30%	25%	34%
Not at all interested	209	107	103	34	34	51	34	27	30	29	58	58	64	39	59	57	31	23
	(-2) 20%	22%	19%	28%	21%	25%	20%	18%	14%	11%	20%	27%	26%	15%	22%	23%	21%	26%
Net: Not interested	483	220	263	72	82	107	85	63	74	92	132	131	128	99	130	133	67	54
	47%	45%	49%	59%	50%	53%	49%	42%	35%	34%	45%	61%	52%	37%	49%	53%	46%	60%
Refused	*	-	*	-	-	-	-	*	-	-	-	-	*	*	-	-	-	-
	*	-	*	-	-	-	-	*	-	-	-	-	*	*	-	-	-	-
Don't know	1	-	1	-	-	-	-	1	1	1	-	-	1	-	-	1	1	-
	*	-	*	-	-	-	-	*	*	*	-	-	*	-	-	*	1%	-
Mean	-0.01	0.06	-0.07	-0.41	-0.11	-0.20	-0.08	0.18	0.43	0.40	0.08	-0.43	-0.18	0.30	-0.09	-0.13	0.03	-0.38
Standard deviation	1.43	1.48	1.39	1.35	1.39	1.43	1.39	1.45	1.43	1.33	1.45	1.35	1.47	1.38	1.41	1.46	1.47	1.38
Standard error	0.04	0.07	0.06	0.16	0.13	0.10	0.10	0.10	0.10	0.07	0.09	0.11	0.09	0.08	0.09	0.09	0.12	0.15

Poll

CATI Fieldwork : June 4th-5th 2008

Absolutes/col percents

Table 2
Q2. How much, if anything, do you feel you know about..
Summary Table
Base: All respondents

	House of Commons	Select committee inquiries	How laws are made	Prime Minister's Questions	House of Lords	Debates in parliament on issues of the day
Unweighted base	1023	1023	1023	1023	1023	1023
Weighted base	1023	1023	1023	1023	1023	1023
A great deal	68 7%	24 2%	82 8%	96 9%	45 4%	55 5%
A fair amount	362 35%	174 17%	389 38%	382 37%	224 22%	356 35%
Not very much	434 42%	428 42%	358 35%	326 32%	453 44%	363 35%
Nothing at all	159 16%	392 38%	187 18%	207 20%	302 29%	247 24%
Refused	-	-	-	1 *	-	-
Don't know	-	6 1%	7 1%	10 1%	-	3 *

Poll
CATI Fieldwork : June 4th-5th 2008

Absolutes/col percents

Table 3
Q2. How much, if anything, do you feel you know about..
House of Commons
Base: All respondents

	Gender			Age						Social Class				Region				
	Total	Male	Female	18-24	25-34	35-44	45-54	55-64	65+	AB	C1	C2	DE	South East	Mid-lands	North Eng-land	Wales & South West	Scot-land
Unweighted base	1023	461	562	74	122	203	199	215	210	327	235	164	297	268	265	254	146	90
Weighted base	1023	491	532	122	162	203	172	152	213	266	297	215	245	268	268	253	144	90
A great deal	68 7%	51 10%	17 3%	5 4%	10 6%	11 5%	11 6%	9 6%	23 11%	28 10%	16 5%	8 4%	17 7%	24 9%	16 6%	11 4%	11 7%	5 6%
A fair amount	362 35%	214 44%	148 28%	30 25%	40 25%	58 29%	67 39%	67 44%	99 47%	117 44%	107 36%	57 26%	81 33%	102 38%	95 35%	92 37%	51 36%	21 24%
Not very much	434 42%	168 34%	267 50%	54 45%	73 45%	99 49%	79 46%	57 38%	72 34%	94 35%	124 42%	118 55%	98 40%	104 39%	122 46%	106 42%	57 39%	45 50%
Nothing at all	159 16%	58 12%	100 19%	32 27%	39 24%	35 17%	15 9%	18 12%	19 9%	28 10%	49 17%	32 15%	50 20%	38 14%	34 13%	43 17%	25 18%	18 20%
Refused	-	-	-	-	-	-	-	-	-	-	-	-	-	-	-	-	-	-

Poll

CATI Fieldwork : June 4th-5th 2008

Absolutes/col percents

Table 4
Q2. How much, if anything, do you feel you know about..
Select committee inquiries
Base: All respondents

	Gender		Age						Social Class				Region					
	Total	Male	Female	18-24	25-34	35-44	45-54	55-64	65+	AB	C1	C2	DE	South East	Mid-lands	North Eng-land	Wales & South West	Scot-land
Unweighted base	1023	461	562	74	122	203	199	215	210	327	235	164	297	268	265	254	146	90
Weighted base	1023	491	532	122	162	203	172	152	213	266	297	215	245	268	268	253	144	90
A great deal	24 2%	15 3%	9 2%	1 1%	6 4%	5 2%	3 2%	6 4%	3 2%	14 5%	6 2%	1 *	3 1%	11 4%	8 3%	4 1%	2 1%	-
A fair amount	174 17%	104 21%	70 13%	10 9%	16 10%	35 17%	30 17%	27 18%	55 26%	65 25%	56 19%	21 10%	32 13%	58 21%	33 12%	46 18%	27 19%	10 11%
Not very much	428 42%	199 40%	229 43%	51 42%	62 38%	91 45%	83 48%	62 41%	78 37%	103 39%	128 43%	100 46%	96 39%	110 41%	114 43%	105 42%	61 42%	38 42%
Nothing at all	392 38%	170 35%	222 42%	58 48%	77 47%	70 34%	55 32%	56 37%	76 36%	82 31%	103 35%	93 43%	113 46%	90 33%	112 42%	96 38%	51 36%	42 47%
Refused	-	-	-	-	-	-	-	-	-	-	-	-	-	-	-	-	-	-
Don't know	6 1%	3 1%	3 1%	2 1%	1 1%	1 1%	1 1%	-	1 *	1 1%	3 1%	-	2 1%	-	1 1%	2 1%	3 2%	-

Poll
CATI Fieldwork : June 4th-5th 2008

Absolutes/col percents

Table 5
Q2. How much, if anything, do you feel you know about..
How laws are made
Base: All respondents

	Gender			Age						Social Class				Region				
	Total	Male	Female	18-24	25-34	35-44	45-54	55-64	65+	AB	C1	C2	DE	South East	Mid-lands	North Eng-land	Wales & South West	Scot-land
Unweighted base	1023	461	562	74	122	203	199	215	210	327	235	164	297	268	265	254	146	90
Weighted base	1023	491	532	122	162	203	172	152	213	266	297	215	245	268	268	253	144	90
A great deal	82 8%	54 11%	29 5%	4 3%	13 8%	17 8%	13 8%	16 10%	20 9%	32 12%	22 7%	14 6%	14 6%	30 11%	18 7%	19 7%	10 7%	5 6%
A fair amount	389 38%	221 45%	168 31%	32 26%	58 36%	76 38%	72 42%	65 43%	86 40%	120 45%	124 42%	75 35%	71 29%	111 41%	100 37%	100 39%	49 34%	30 33%
Not very much	358 35%	145 30%	213 40%	59 48%	55 34%	74 36%	58 34%	49 32%	63 30%	79 30%	96 32%	84 39%	99 40%	79 30%	98 37%	92 36%	51 36%	37 41%
Nothing at all	187 18%	69 14%	118 22%	27 22%	34 21%	35 17%	27 16%	22 14%	41 19%	30 11%	54 18%	42 20%	60 25%	46 17%	49 18%	42 17%	32 22%	18 20%
Refused	-	-	-	-	-	-	-	-	-	-	-	-	-	-	-	-	-	-
Don't know	7 1%	2 *	5 1%	-	1 1%	1 1%	1 1%	1 *	2 1%	4 2%	1 *	-	1 *	1 1%	3 1%	-	2 2%	-

Poll

CATI Fieldwork : June 4th-5th 2008

Absolutes/col percents

Table 6
Q2. How much, if anything, do you feel you know about..
Prime Minister's Questions
Base: All respondents

	Gender			Age						Social Class				Region				
	Total	Male	Female	18-24	25-34	35-44	45-54	55-64	65+	AB	C1	C2	DE	South East	Mid-lands	North Eng-land	Wales & South West	Scot-land
Unweighted base	1023	461	562	74	122	203	199	215	210	327	235	164	297	268	265	254	146	90
Weighted base	1023	491	532	122	162	203	172	152	213	266	297	215	245	268	268	253	144	90
A great deal	96 9%	68 14%	28 5%	10 8%	19 12%	12 6%	16 9%	15 10%	24 11%	34 13%	24 8%	13 6%	25 10%	35 13%	23 9%	22 9%	9 6%	6 7%
A fair amount	382 37%	206 42%	176 33%	37 30%	44 27%	68 34%	71 41%	70 46%	93 44%	125 47%	115 39%	65 30%	77 31%	104 39%	93 35%	99 39%	57 39%	30 34%
Not very much	326 32%	126 26%	200 38%	32 26%	65 40%	70 35%	57 33%	42 28%	59 28%	68 26%	110 37%	74 34%	74 30%	80 30%	95 36%	73 29%	42 29%	35 39%
Nothing at all	207 20%	82 17%	125 23%	39 32%	30 19%	50 25%	26 15%	25 16%	37 17%	36 13%	45 15%	59 27%	68 28%	49 18%	47 18%	58 23%	35 24%	18 21%
Refused	1 *	1 *	-	-	-	-	1 1%	-	-	-	1 *	-	-	-	-	-	1 1%	-
Don't know	10 1%	7 1%	3 1%	4 3%	3 2%	2 1%	1 1%	* *	-	3 1%	1 *	4 2%	2 1%	1 *	9 3%	1 *	-	-

Poll
CATI Fieldwork : June 4th-5th 2008

Absolutes/col percents

Table 7
Q2. How much, if anything, do you feel you know about..
House of Lords
Base: All respondents

	Gender			Age						Social Class				Region				
	Total	Male	Female	18-24	25-34	35-44	45-54	55-64	65+	AB	C1	C2	DE	South East	Mid-lands	North Eng-land	Wales & South West	Scot-land
Unweighted base	1023	461	562	74	122	203	199	215	210	327	235	164	297	268	265	254	146	90
Weighted base	1023	491	532	122	162	203	172	152	213	266	297	215	245	268	268	253	144	90
A great deal	45 4%	28 6%	16 3%	7 5%	8 5%	6 3%	9 5%	6 4%	10 5%	17 6%	13 4%	7 3%	8 3%	15 6%	13 5%	10 4%	5 3%	2 2%
A fair amount	224 22%	128 26%	96 18%	20 16%	25 16%	46 23%	42 24%	34 22%	56 27%	79 30%	62 21%	34 16%	48 19%	70 26%	48 18%	61 24%	32 22%	13 14%
Not very much	453 44%	197 40%	257 48%	59 49%	90 55%	98 48%	83 48%	61 40%	62 29%	117 44%	140 47%	105 49%	91 37%	122 46%	133 50%	100 40%	59 41%	39 43%
Nothing at all	302 29%	138 28%	163 31%	36 30%	39 24%	53 26%	39 22%	51 34%	84 40%	53 20%	82 28%	68 32%	99 40%	61 23%	74 27%	81 32%	49 34%	37 41%
Refused	-	-	-	-	-	-	-	-	-	-	-	-	-	-	-	-	-	-

Poll
CATI Fieldwork : June 4th-5th 2008

Absolutes/col percents

Table 8
Q2. How much, if anything, do you feel you know about..
Debates in parliament on issues of the day
Base: All respondents

	Gender			Age						Social Class				Region				
	Total	Male	Female	18-24	25-34	35-44	45-54	55-64	65+	AB	C1	C2	DE	South East	Mid-lands	North Eng-land	Wales & South West	Scot-land
Unweighted base	1023	461	562	74	122	203	199	215	210	327	235	164	297	268	265	254	146	90
Weighted base	1023	491	532	122	162	203	172	152	213	266	297	215	245	268	268	253	144	90
A great deal	55 5%	37 8%	18 3%	1 1%	9 5%	9 4%	5 3%	10 6%	22 10%	22 8%	13 4%	9 4%	10 4%	20 8%	15 6%	8 3%	8 6%	3 3%
A fair amount	356 35%	196 40%	160 30%	36 30%	49 30%	63 31%	65 38%	57 37%	86 40%	122 46%	107 36%	54 25%	73 30%	99 37%	87 33%	93 37%	50 34%	26 29%
Not very much	363 35%	144 29%	219 41%	50 41%	59 36%	85 42%	66 38%	50 33%	54 25%	83 31%	108 36%	89 41%	84 34%	93 35%	97 36%	94 37%	44 30%	35 39%
Nothing at all	247 24%	113 23%	134 25%	35 29%	44 27%	46 23%	36 21%	36 24%	51 24%	37 14%	69 23%	63 29%	78 32%	55 20%	68 25%	57 23%	43 30%	24 27%
Refused	-	-	-	-	-	-	-	-	-	-	-	-	-	-	-	-	-	-
Don't know	3 *	1 *	2 *	-	1 1%	1 *	-	-	1 *	2 1%	-	-	1 *	1 *	1 *	-	-	1 1%

Poll
CATI Fieldwork : June 4th-5th 2008

Absolutes/col percents

Table 9

Q3. Would you like to know more about what happens in the UK Parliament in Westminster..?**Base: All respondents**

	Gender		Age						Social Class				Region					
	Total	Male	Female	18-24	25-34	35-44	45-54	55-64	65+	AB	C1	C2	DE	South East	Mid-lands	North Eng-land	Wales & South West	Scot-land
Unweighted base	1023	461	562	74	122	203	199	215	210	327	235	164	297	268	265	254	146	90
Weighted base	1023	491	532	122	162	203	172	152	213	266	297	215	245	268	268	253	144	90
Yes	215 21%	88 18%	126 24%	43 36%	32 20%	37 18%	25 14%	29 19%	49 23%	64 24%	63 21%	42 19%	45 19%	61 23%	67 25%	50 20%	25 17%	12 13%
Possibly	262 26%	129 26%	133 25%	25 21%	61 38%	58 29%	44 26%	35 23%	37 18%	70 26%	92 31%	54 25%	45 18%	70 26%	73 27%	62 24%	31 21%	27 30%
No	542 53%	272 55%	271 51%	53 43%	67 41%	107 53%	101 59%	88 58%	126 59%	128 48%	142 48%	118 55%	155 63%	137 51%	129 48%	138 55%	88 61%	50 56%
Don't know	4 *	2 *	2 *	- -	2 1%	- -	2 1%	- -	- -	3 1%	- -	1 1%	- -	1 *	- -	2 1%	- -	1 1%

Poll
CATI Fieldwork : June 4th-5th 2008

Absolutes/col percents

Table 10

Q4. To what extent would you agree or disagree with the following statements about the UK Parliament in Westminster ?**Summary Table****Base: All respondents**

	Government and parliament are the same thing	Parliament broadly reflects the make-up of British society	Parliament is not relevant to the lives of ordinary people	I feel I have a good understanding of the way Parliament works	Parliament undertakes important functions that no other body can undertake	It is difficult to find out about what happens in Parliament	Parliament is working for me
Unweighted base	1023	1023	1023	1023	1023	1023	1023
Weighted base	1023	1023	1023	1023	1023	1023	1023
5 - Agree Strongly	142 14%	85 8%	148 14%	137 13%	231 23%	141 14%	84 8%
4	104 10%	102 10%	138 13%	198 19%	254 25%	129 13%	117 11%
3	257 25%	273 27%	224 22%	272 27%	257 25%	272 27%	273 27%
2	225 22%	243 24%	205 20%	196 19%	117 11%	228 22%	249 24%
1- Disagree Strongly	273 27%	304 30%	297 29%	207 20%	139 14%	232 23%	284 28%
Refused	2 *	-	-	-	1 *	-	1 *
Don't know	20 2%	15 1%	11 1%	14 1%	25 2%	20 2%	15 1%
Mean	2.62	2.43	2.64	2.86	3.32	2.72	2.47
Standard deviation	1.36	1.25	1.40	1.32	1.32	1.33	1.24
Standard error	0.04	0.04	0.04	0.04	0.04	0.04	0.04

Poll

CATI Fieldwork : June 4th-5th 2008

Absolutes/col percents

Table 11

Q4. To what extent would you agree or disagree with the following statements about the UK Parliament in Westminster ?

Government and parliament are the same thing

Base: All respondents

	Gender			Age						Social Class				Region				
	Total	Male	Female	18-24	25-34	35-44	45-54	55-64	65+	AB	C1	C2	DE	South East	Mid-lands	North Eng-land	Wales & South West	Scot-land
Unweighted base	1023	461	562	74	122	203	199	215	210	327	235	164	297	268	265	254	146	90
Weighted base	1023	491	532	122	162	203	172	152	213	266	297	215	245	268	268	253	144	90
5 - Agree Strongly	142 14%	72 15%	70 13%	14 11%	17 10%	29 14%	13 8%	23 15%	46 22%	28 11%	34 12%	37 17%	43 17%	35 13%	44 16%	34 13%	19 13%	10 11%
4	104 10%	49 10%	55 10%	12 10%	17 11%	20 10%	12 7%	16 10%	27 13%	22 8%	34 11%	22 10%	26 11%	20 8%	27 10%	31 12%	16 11%	10 11%
3	257 25%	112 23%	145 27%	35 29%	36 22%	49 24%	56 32%	33 21%	49 23%	59 22%	76 26%	57 26%	65 27%	67 25%	66 25%	70 28%	34 23%	20 23%
2	225 22%	92 19%	133 25%	35 29%	38 24%	48 24%	36 21%	33 22%	34 16%	59 22%	68 23%	52 24%	47 19%	65 24%	60 22%	46 18%	33 23%	21 24%
1- Disagree Strongly	273 27%	155 31%	118 22%	24 20%	47 29%	53 26%	52 30%	45 30%	52 25%	89 33%	83 28%	46 21%	56 23%	78 29%	68 25%	59 23%	40 28%	28 31%
Refused	2 *	2 *	-	-	-	-	-	-	2 1%	1 *	-	-	1 1%	-	-	2 1%	-	-
Don't know	20 2%	10 2%	10 2%	3 2%	7 4%	4 2%	2 1%	3 2%	2 1%	8 3%	2 1%	2 1%	8 3%	3 1%	3 1%	11 4%	3 2%	1 1%
Mean	2.62	2.56	2.66	2.63	2.48	2.62	2.41	2.57	2.91	2.39	2.56	2.78	2.80	2.51	2.69	2.73	2.59	2.45
Standard deviation	1.36	1.41	1.30	1.24	1.32	1.36	1.22	1.41	1.48	1.33	1.32	1.36	1.39	1.34	1.39	1.34	1.36	1.33
Standard error	0.04	0.07	0.06	0.15	0.12	0.10	0.09	0.10	0.10	0.07	0.09	0.11	0.08	0.08	0.09	0.09	0.11	0.14

Poll

CATI Fieldwork : June 4th-5th 2008

Absolutes/col percents

Table 12

Q4. To what extent would you agree or disagree with the following statements about the UK Parliament in Westminster ?

Parliament broadly reflects the make-up of British society

Base: All respondents

	Gender			Age						Social Class				Region				
	Total	Male	Female	18-24	25-34	35-44	45-54	55-64	65+	AB	C1	C2	DE	South East	Mid-lands	North Eng-land	Wales & South West	Scot-land
Unweighted base	1023	461	562	74	122	203	199	215	210	327	235	164	297	268	265	254	146	90
Weighted base	1023	491	532	122	162	203	172	152	213	266	297	215	245	268	268	253	144	90
5 - Agree Strongly	85 8%	41 8%	45 8%	12 10%	13 8%	15 7%	10 6%	13 9%	21 10%	12 4%	24 8%	21 10%	29 12%	16 6%	25 9%	23 9%	11 7%	10 11%
4	102 10%	50 10%	53 10%	9 8%	19 12%	11 6%	22 13%	22 14%	19 9%	25 9%	42 14%	19 9%	17 7%	27 10%	24 9%	26 10%	15 10%	11 12%
3	273 27%	125 26%	148 28%	38 31%	35 21%	49 24%	43 25%	36 24%	73 34%	77 29%	81 27%	60 28%	54 22%	65 24%	69 26%	72 29%	42 29%	24 27%
2	243 24%	110 22%	133 25%	31 26%	49 30%	59 29%	39 23%	26 17%	39 18%	71 27%	68 23%	54 25%	50 20%	77 29%	60 22%	52 21%	34 24%	20 22%
1- Disagree Strongly	304 30%	160 33%	144 27%	30 25%	42 26%	67 33%	57 33%	51 33%	58 27%	79 30%	80 27%	59 28%	86 35%	79 30%	88 33%	74 29%	39 27%	24 27%
Refused	-	-	-	-	-	-	-	-	-	-	-	-	-	-	-	-	-	-
Don't know	15 1%	5 1%	10 2%	-	5 3%	2 1%	1 1%	5 3%	3 1%	2 1%	3 1%	1 1%	9 4%	3 1%	3 1%	5 2%	4 3%	1 1%
Mean	2.43	2.38	2.47	2.53	2.45	2.25	2.35	2.46	2.56	2.32	2.53	2.47	2.37	2.33	2.39	2.49	2.46	2.60
Standard deviation	1.25	1.27	1.23	1.24	1.24	1.19	1.23	1.33	1.26	1.13	1.25	1.25	1.36	1.18	1.29	1.28	1.21	1.32
Standard error	0.04	0.06	0.05	0.14	0.11	0.08	0.09	0.09	0.09	0.06	0.08	0.10	0.08	0.07	0.08	0.08	0.10	0.14

Poll

CATI Fieldwork : June 4th-5th 2008

Absolutes/col percents

Table 13

Q4. To what extent would you agree or disagree with the following statements about the UK Parliament in Westminster ?

Parliament is not relevant to the lives of ordinary people

Base: All respondents

	Gender		Age						Social Class				Region					
	Total	Male	Female	18-24	25-34	35-44	45-54	55-64	65+	AB	C1	C2	DE	South East	Mid-lands	North Eng-land	Wales & South West	Scot-land
Unweighted base	1023	461	562	74	122	203	199	215	210	327	235	164	297	268	265	254	146	90
Weighted base	1023	491	532	122	162	203	172	152	213	266	297	215	245	268	268	253	144	90
5 - Agree Strongly	148 14%	77 16%	71 13%	11 9%	11 7%	38 19%	20 12%	33 22%	33 16%	27 10%	37 13%	39 18%	44 18%	33 12%	41 15%	49 19%	12 8%	12 13%
4	138 13%	66 13%	71 13%	16 13%	23 14%	22 11%	26 15%	15 10%	36 17%	30 11%	46 16%	29 14%	32 13%	24 9%	38 14%	36 14%	27 19%	12 13%
3	224 22%	92 19%	132 25%	29 24%	41 25%	50 25%	37 22%	30 20%	37 17%	53 20%	85 29%	46 21%	39 16%	60 23%	69 26%	44 18%	32 22%	19 21%
2	205 20%	93 19%	112 21%	36 30%	36 22%	41 20%	39 23%	26 17%	28 13%	64 24%	60 20%	40 19%	42 17%	65 24%	53 20%	44 17%	32 22%	12 13%
1- Disagree Strongly	297 29%	157 32%	140 26%	30 24%	45 28%	50 25%	51 29%	45 30%	76 36%	87 33%	66 22%	60 28%	85 34%	82 31%	67 25%	73 29%	40 28%	35 39%
Refused	-	-	-	-	-	-	-	-	-	-	-	-	-	-	-	-	-	-
Don't know	11 1%	6 1%	6 1%	-	6 4%	1 *	-	2 1%	3 1%	4 2%	2 1%	1 1%	4 2%	3 1%	*	6 3%	1 *	1 1%
Mean	2.64	2.61	2.66	2.53	2.49	2.79	2.57	2.77	2.63	2.41	2.76	2.76	2.63	2.48	2.75	2.78	2.57	2.48
Standard deviation	1.40	1.45	1.36	1.25	1.25	1.43	1.36	1.53	1.50	1.33	1.31	1.46	1.52	1.35	1.38	1.51	1.30	1.46
Standard error	0.04	0.07	0.06	0.15	0.12	0.10	0.10	0.10	0.10	0.07	0.09	0.11	0.09	0.08	0.08	0.10	0.11	0.15

Poll

CATI Fieldwork : June 4th-5th 2008

Absolutes/col percents

Table 14

Q4. To what extent would you agree or disagree with the following statements about the UK Parliament in Westminster ?

I feel I have a good understanding of the way Parliament works

Base: All respondents

	Gender		Age						Social Class				Region					
	Total	Male	Female	18-24	25-34	35-44	45-54	55-64	65+	AB	C1	C2	DE	South East	Mid-lands	North Eng-land	Wales & South West	Scot-land
Unweighted base	1023	461	562	74	122	203	199	215	210	327	235	164	297	268	265	254	146	90
Weighted base	1023	491	532	122	162	203	172	152	213	266	297	215	245	268	268	253	144	90
5 - Agree Strongly	137 13%	88 18%	49 9%	14 11%	16 10%	17 8%	24 14%	21 14%	45 21%	36 14%	45 15%	21 10%	34 14%	43 16%	31 12%	34 13%	16 11%	12 14%
4	198 19%	118 24%	80 15%	16 14%	24 15%	38 19%	36 21%	34 23%	49 23%	64 24%	71 24%	29 13%	34 14%	58 22%	43 16%	52 20%	30 21%	15 17%
3	272 27%	134 27%	138 26%	28 23%	47 29%	46 23%	53 31%	42 27%	55 26%	87 33%	55 19%	66 31%	63 26%	78 29%	83 31%	52 21%	35 24%	23 26%
2	196 19%	77 16%	119 22%	33 27%	36 22%	49 24%	31 18%	21 14%	26 12%	41 15%	67 22%	43 20%	46 19%	39 15%	57 21%	53 21%	29 20%	17 19%
1- Disagree Strongly	207 20%	66 13%	141 27%	30 25%	35 22%	50 25%	27 16%	33 22%	32 15%	31 12%	54 18%	55 26%	66 27%	50 19%	51 19%	56 22%	29 20%	21 23%
Refused	-	-	-	-	-	-	-	-	-	-	-	-	-	-	-	-	-	-
Don't know	14 1%	9 2%	5 1%	-	4 2%	1 1%	2 1%	1 1%	5 2%	6 2%	3 1%	1 1%	3 1%	*	2 1%	6 2%	4 3%	1 2%
Mean	2.86	3.18	2.57	2.59	2.69	2.61	2.99	2.94	3.23	3.13	2.96	2.61	2.68	3.02	2.80	2.81	2.82	2.79
Standard deviation	1.32	1.28	1.28	1.30	1.26	1.27	1.26	1.34	1.34	1.20	1.35	1.27	1.37	1.33	1.26	1.36	1.30	1.36
Standard error	0.04	0.06	0.05	0.15	0.12	0.09	0.09	0.09	0.09	0.07	0.09	0.10	0.08	0.08	0.08	0.09	0.11	0.14

Poll

CATI Fieldwork : June 4th-5th 2008

Absolutes/col percents

Table 15

Q4. To what extent would you agree or disagree with the following statements about the UK Parliament in Westminster ?

Parliament undertakes important functions that no other body can undertake

Base: All respondents

	Gender			Age						Social Class				Region				
	Total	Male	Female	18-24	25-34	35-44	45-54	55-64	65+	AB	C1	C2	DE	South East	Mid-lands	North Eng-land	Wales & South West	Scot-land
Unweighted base	1023	461	562	74	122	203	199	215	210	327	235	164	297	268	265	254	146	90
Weighted base	1023	491	532	122	162	203	172	152	213	266	297	215	245	268	268	253	144	90
5 - Agree Strongly	231 23%	135 28%	95 18%	24 19%	36 22%	33 16%	39 22%	38 25%	62 29%	77 29%	62 21%	39 18%	53 22%	67 25%	61 23%	53 21%	32 22%	18 20%
4	254 25%	136 28%	117 22%	24 19%	50 31%	56 27%	47 27%	34 22%	44 21%	77 29%	91 31%	34 16%	51 21%	74 28%	67 25%	54 21%	42 29%	17 18%
3	257 25%	102 21%	154 29%	42 34%	36 22%	53 26%	44 25%	33 22%	49 23%	55 21%	82 28%	63 29%	57 23%	68 25%	71 26%	63 25%	30 21%	25 27%
2	117 11%	52 11%	65 12%	15 12%	18 11%	27 13%	20 12%	16 10%	23 11%	29 11%	30 10%	30 14%	29 12%	27 10%	26 10%	35 14%	18 12%	12 13%
1- Disagree Strongly	139 14%	55 11%	83 16%	17 14%	15 9%	31 15%	20 12%	27 18%	30 14%	18 7%	27 9%	46 22%	48 19%	28 11%	39 14%	37 14%	16 11%	19 21%
Refused	1 *	1 *	-	-	-	-	-	-	1 *	1 *	-	-	-	-	-	-	1 1%	-
Don't know	25 2%	9 2%	17 3%	1 1%	8 5%	4 2%	3 2%	4 3%	4 2%	8 3%	6 2%	4 2%	8 3%	3 1%	4 2%	11 4%	6 4%	1 1%
Mean	3.32	3.51	3.15	3.19	3.47	3.17	3.38	3.28	3.41	3.65	3.45	2.95	3.14	3.47	3.32	3.21	3.40	3.04
Standard deviation	1.32	1.31	1.31	1.28	1.24	1.29	1.28	1.43	1.39	1.22	1.20	1.38	1.42	1.27	1.33	1.35	1.30	1.40
Standard error	0.04	0.06	0.06	0.15	0.11	0.09	0.09	0.10	0.10	0.07	0.08	0.11	0.08	0.08	0.08	0.09	0.11	0.15

Poll

CATI Fieldwork : June 4th-5th 2008

Absolutes/col percents

Table 16

Q4. To what extent would you agree or disagree with the following statements about the UK Parliament in Westminster ?

It is difficult to find out about what happens in Parliament

Base: All respondents

	Gender		Age						Social Class				Region					
	Total	Male	Female	18-24	25-34	35-44	45-54	55-64	65+	AB	C1	C2	DE	South East	Mid-lands	North Eng-land	Wales & South West	Scot-land
Unweighted base	1023	461	562	74	122	203	199	215	210	327	235	164	297	268	265	254	146	90
Weighted base	1023	491	532	122	162	203	172	152	213	266	297	215	245	268	268	253	144	90
5 - Agree Strongly	141 14%	62 13%	79 15%	14 11%	19 12%	33 16%	14 8%	23 15%	38 18%	20 8%	44 15%	25 11%	53 21%	34 13%	41 15%	29 12%	18 12%	19 21%
4	129 13%	52 11%	77 15%	21 18%	20 12%	23 11%	23 13%	18 12%	24 11%	34 13%	50 17%	16 8%	30 12%	40 15%	29 11%	37 15%	16 11%	8 8%
3	272 27%	138 28%	134 25%	35 29%	49 30%	56 28%	43 25%	38 25%	51 24%	72 27%	69 23%	76 35%	56 23%	75 28%	71 26%	64 25%	40 28%	22 24%
2	228 22%	110 22%	118 22%	27 22%	35 22%	43 21%	40 23%	33 22%	49 23%	79 30%	64 21%	47 22%	38 15%	54 20%	69 26%	52 20%	34 23%	20 22%
1- Disagree Strongly	232 23%	123 25%	110 21%	24 20%	34 21%	44 22%	49 28%	35 23%	48 22%	57 21%	67 23%	47 22%	61 25%	60 22%	56 21%	60 24%	36 25%	21 23%
Refused	-	-	-	-	-	-	-	-	-	-	-	-	-	-	-	-	-	-
Don't know	20 2%	7 1%	14 3%	1 1%	5 3%	4 2%	3 2%	5 3%	2 1%	4 2%	4 1%	5 2%	7 3%	4 2%	3 1%	11 4%	1 1%	1 1%
Mean	2.72	2.63	2.80	2.78	2.72	2.79	2.49	2.73	2.79	2.54	2.79	2.64	2.89	2.75	2.74	2.69	2.63	2.81
Standard deviation	1.33	1.31	1.34	1.27	1.28	1.36	1.27	1.36	1.40	1.19	1.37	1.24	1.48	1.31	1.33	1.32	1.31	1.44
Standard error	0.04	0.06	0.06	0.15	0.12	0.10	0.09	0.09	0.10	0.07	0.09	0.10	0.09	0.08	0.08	0.08	0.11	0.15

Poll
CATI Fieldwork : June 4th-5th 2008

Absolutes/col percents

Table 17

Q4. To what extent would you agree or disagree with the following statements about the UK Parliament in Westminster ?**Parliament is working for me****Base: All respondents**

	Gender		Age						Social Class				Region					
	Total	Male	Female	18-24	25-34	35-44	45-54	55-64	65+	AB	C1	C2	DE	South East	Mid-lands	North Eng-land	Wales & South West	Scot-land
Unweighted base	1023	461	562	74	122	203	199	215	210	327	235	164	297	268	265	254	146	90
Weighted base	1023	491	532	122	162	203	172	152	213	266	297	215	245	268	268	253	144	90
5 - Agree Strongly	84 8%	40 8%	44 8%	6 5%	13 8%	11 5%	12 7%	14 9%	27 13%	13 5%	22 7%	19 9%	30 12%	20 8%	22 8%	23 9%	13 9%	5 6%
4	117 11%	57 12%	60 11%	21 17%	17 10%	24 12%	16 9%	15 10%	24 11%	38 14%	37 13%	26 12%	16 6%	32 12%	35 13%	23 9%	19 13%	8 9%
3	273 27%	122 25%	151 28%	48 39%	47 29%	45 22%	49 29%	37 25%	46 22%	82 31%	90 30%	57 27%	44 18%	79 30%	72 27%	64 25%	41 28%	16 18%
2	249 24%	122 25%	127 24%	23 19%	46 29%	60 30%	43 25%	30 20%	47 22%	81 30%	75 25%	36 17%	57 23%	66 25%	63 23%	64 25%	28 20%	28 31%
1- Disagree Strongly	284 28%	143 29%	141 27%	22 18%	33 20%	61 30%	52 30%	51 34%	66 31%	47 18%	70 24%	73 34%	94 38%	69 26%	75 28%	71 28%	39 27%	30 33%
Refused	1 *	-	1 *	-	-	-	-	1 *	-	-	-	-	1 *	-	-	-	1 1%	-
Don't know	15 1%	7 1%	8 1%	1 1%	6 4%	2 1%	-	4 3%	2 1%	6 2%	2 1%	3 1%	5 2%	1 *	1 *	7 3%	4 2%	2 3%
Mean	2.47	2.44	2.50	2.72	2.56	2.32	2.39	2.39	2.53	2.57	2.54	2.44	2.29	2.51	2.50	2.44	2.56	2.21
Standard deviation	1.24	1.25	1.24	1.12	1.18	1.18	1.21	1.31	1.37	1.09	1.20	1.32	1.37	1.21	1.25	1.26	1.28	1.19
Standard error	0.04	0.06	0.05	0.13	0.11	0.08	0.09	0.09	0.10	0.06	0.08	0.10	0.08	0.07	0.08	0.08	0.11	0.13

Poll
CATI Fieldwork : June 4th-5th 2008

Absolutes/col percents

Table 18

Q5. Would you associate the following functions mainly with Government or Parliament?**Summary Table****Base: All who say there is a difference between Government and Parliament**

	Debating and passing laws	Ensuring that laws are enforced	Drafting major legislation	Taking up the concerns of individual people	Delivering public services	Holding ministers to responsible for their actions
Unweighted base	784	784	784	784	784	784
Weighted base	777	777	777	777	777	777
Government	124 16%	385 49%	264 34%	201 26%	445 57%	184 24%
Parliament	330 42%	114 15%	239 31%	295 38%	92 12%	329 42%
Both	225 29%	162 21%	197 25%	140 18%	138 18%	164 21%
Neither	71 9%	88 11%	42 5%	109 14%	78 10%	72 9%
Don't know	28 4%	29 4%	35 5%	33 4%	24 3%	27 3%

Poll
CATI Fieldwork : June 4th-5th 2008

Absolutes/col percents

Table 19

Q5. Would you associate the following functions mainly with Government or Parliament?**Debating and passing laws****Base: All who say there is a difference between Government and Parliament**

	Gender			Age						Social Class				Region				
	Total	Male	Female	18-24	25-34	35-44	45-54	55-64	65+	AB	C1	C2	DE	South East	Mid-lands	North Eng-land	Wales & South West	Scot-land
Unweighted base	784	351	433	58	97	156	168	163	142	268	180	121	215	214	199	189	110	72
Weighted base	777	370	407	96	128	153	146	114	140	216	229	156	177	213	197	187	109	71
Government	124 16%	50 13%	74 18%	12 12%	8 6%	24 16%	35 24%	20 17%	25 18%	17 8%	33 14%	40 26%	34 19%	22 10%	29 15%	25 13%	27 25%	21 30%
Parliament	330 42%	178 48%	152 37%	27 28%	66 51%	66 43%	67 46%	50 44%	54 38%	119 55%	112 49%	42 27%	57 32%	102 48%	87 44%	82 44%	37 34%	22 31%
Both	225 29%	102 27%	123 30%	43 44%	33 26%	48 31%	34 23%	29 26%	37 27%	65 30%	58 25%	51 32%	51 29%	68 32%	51 26%	59 31%	27 25%	20 28%
Neither	71 9%	32 9%	38 9%	10 10%	11 9%	12 8%	9 6%	12 11%	16 11%	8 4%	17 7%	18 11%	28 16%	17 8%	22 11%	14 7%	12 11%	5 7%
Don't know	28 4%	9 2%	19 5%	5 5%	9 7%	3 2%	1 1%	3 2%	8 6%	8 4%	9 4%	5 3%	7 4%	4 2%	7 4%	8 4%	6 6%	3 4%

Poll
CATI Fieldwork : June 4th-5th 2008

Absolutes/col percents

Table 20

Q5. Would you associate the following functions mainly with Government or Parliament?**Ensuring that laws are enforced****Base: All who say there is a difference between Government and Parliament**

	Gender			Age						Social Class				Region				
	Total	Male	Female	18-24	25-34	35-44	45-54	55-64	65+	AB	C1	C2	DE	South East	Mid-lands	North Eng-land	Wales & South West	Scot-land
Unweighted base	784	351	433	58	97	156	168	163	142	268	180	121	215	214	199	189	110	72
Weighted base	777	370	407	96	128	153	146	114	140	216	229	156	177	213	197	187	109	71
Government	385 49%	195 53%	190 47%	50 52%	85 67%	65 43%	70 48%	55 49%	58 42%	122 57%	120 52%	73 47%	70 40%	105 49%	100 51%	96 51%	51 47%	32 46%
Parliament	114 15%	53 14%	61 15%	14 14%	6 5%	24 15%	30 21%	14 13%	27 19%	21 10%	35 15%	26 17%	32 18%	29 14%	23 12%	34 18%	14 13%	13 19%
Both	162 21%	72 19%	90 22%	19 20%	13 10%	49 32%	27 18%	25 22%	28 20%	42 20%	39 17%	33 21%	46 26%	49 23%	37 19%	39 21%	21 19%	16 22%
Neither	88 11%	43 12%	45 11%	10 10%	11 9%	11 7%	16 11%	17 15%	22 16%	21 10%	26 11%	18 11%	24 13%	25 12%	25 13%	12 6%	18 16%	8 11%
Don't know	29 4%	8 2%	21 5%	3 3%	13 10%	4 2%	3 2%	2 2%	4 3%	9 4%	9 4%	6 4%	5 3%	4 2%	11 6%	7 4%	5 5%	1 2%

Poll
CATI Fieldwork : June 4th-5th 2008

Absolutes/col percents

Table 21

Q5. Would you associate the following functions mainly with Government or Parliament?**Drafting major legislation****Base: All who say there is a difference between Government and Parliament**

	Gender			Age						Social Class				Region				
	Total	Male	Female	18-24	25-34	35-44	45-54	55-64	65+	AB	C1	C2	DE	South East	Mid-lands	North Eng-land	Wales & South West	Scot-land
Unweighted base	784	351	433	58	97	156	168	163	142	268	180	121	215	214	199	189	110	72
Weighted base	777	370	407	96	128	153	146	114	140	216	229	156	177	213	197	187	109	71
Government	264 34%	134 36%	130 32%	20 21%	56 44%	46 30%	58 40%	33 29%	51 36%	79 37%	79 34%	48 31%	58 33%	78 37%	63 32%	73 39%	36 33%	15 21%
Parliament	239 31%	118 32%	121 30%	30 31%	26 20%	53 35%	49 33%	38 33%	43 31%	65 30%	82 36%	44 28%	48 27%	63 29%	60 31%	54 29%	31 28%	32 45%
Both	197 25%	89 24%	108 27%	37 38%	28 22%	43 28%	30 21%	31 27%	28 20%	54 25%	55 24%	48 31%	40 23%	60 28%	51 26%	45 24%	26 23%	16 23%
Neither	42 5%	18 5%	23 6%	4 4%	7 5%	4 3%	8 5%	7 6%	12 9%	3 1%	9 4%	11 7%	19 11%	6 3%	14 7%	4 2%	11 10%	6 9%
Don't know	35 5%	12 3%	24 6%	5 5%	11 9%	7 4%	2 1%	5 5%	6 4%	14 6%	5 2%	5 3%	11 6%	6 3%	8 4%	12 6%	6 6%	2 3%

Poll
CATI Fieldwork : June 4th-5th 2008

Absolutes/col percents

Table 22

Q5. Would you associate the following functions mainly with Government or Parliament?**Taking up the concerns of individual people****Base: All who say there is a difference between Government and Parliament**

	Gender			Age						Social Class				Region				
	Total	Male	Female	18-24	25-34	35-44	45-54	55-64	65+	AB	C1	C2	DE	South East	Mid-lands	North Eng-land	Wales & South West	Scot-land
Unweighted base	784	351	433	58	97	156	168	163	142	268	180	121	215	214	199	189	110	72
Weighted base	777	370	407	96	128	153	146	114	140	216	229	156	177	213	197	187	109	71
Government	201 26%	75 20%	126 31%	28 29%	36 28%	42 27%	44 30%	24 21%	27 19%	59 27%	56 24%	45 29%	41 23%	58 27%	44 23%	49 26%	30 28%	19 27%
Parliament	295 38%	157 42%	138 34%	23 24%	56 43%	52 34%	63 43%	43 38%	58 42%	96 44%	97 43%	48 31%	53 30%	81 38%	80 41%	66 35%	42 38%	25 36%
Both	140 18%	75 20%	65 16%	25 26%	15 12%	34 22%	18 12%	24 21%	24 17%	30 14%	33 14%	36 23%	41 23%	39 18%	36 18%	35 19%	19 17%	12 17%
Neither	109 14%	50 13%	59 14%	17 17%	12 9%	22 14%	18 12%	20 18%	20 15%	20 9%	31 13%	23 15%	34 19%	27 12%	30 15%	25 13%	15 14%	12 17%
Don't know	33 4%	14 4%	19 5%	3 3%	10 8%	4 2%	3 2%	3 3%	10 7%	11 5%	12 5%	3 2%	8 4%	8 4%	7 4%	12 6%	4 3%	3 4%

Poll
CATI Fieldwork : June 4th-5th 2008

Absolutes/col percents

Table 23

Q5. Would you associate the following functions mainly with Government or Parliament?**Delivering public services****Base: All who say there is a difference between Government and Parliament**

	Gender			Age						Social Class				Region				
	Total	Male	Female	18-24	25-34	35-44	45-54	55-64	65+	AB	C1	C2	DE	South East	Mid-lands	North Eng-land	Wales & South West	Scot-land
Unweighted base	784	351	433	58	97	156	168	163	142	268	180	121	215	214	199	189	110	72
Weighted base	777	370	407	96	128	153	146	114	140	216	229	156	177	213	197	187	109	71
Government	445	205	240	56	80	90	91	61	67	144	138	81	82	138	110	101	61	36
	57%	55%	59%	58%	63%	58%	62%	54%	48%	67%	60%	52%	46%	65%	56%	54%	56%	50%
Parliament	92	45	47	10	15	6	17	17	26	18	32	21	22	15	20	32	16	10
	12%	12%	12%	11%	12%	4%	12%	15%	19%	8%	14%	13%	12%	7%	10%	17%	15%	13%
Both	138	70	67	22	15	43	22	18	18	32	39	28	38	36	39	31	16	16
	18%	19%	17%	23%	12%	28%	15%	16%	13%	15%	17%	18%	22%	17%	20%	16%	15%	22%
Neither	78	39	40	5	9	14	14	14	22	10	15	26	27	18	23	15	14	8
	10%	10%	10%	5%	7%	9%	10%	12%	16%	5%	7%	16%	15%	9%	12%	8%	13%	11%
Don't know	24	12	12	3	9	-	2	4	6	10	5	1	8	6	5	9	2	2
	3%	3%	3%	3%	7%	-	1%	3%	5%	5%	2%	1%	4%	3%	2%	5%	2%	3%

Poll
CATI Fieldwork : June 4th-5th 2008

Absolutes/col percents

Table 24

Q5. Would you associate the following functions mainly with Government or Parliament?**Holding ministers to responsible for their actions****Base: All who say there is a difference between Government and Parliament**

	Gender			Age						Social Class				Region				
	Total	Male	Female	18-24	25-34	35-44	45-54	55-64	65+	AB	C1	C2	DE	South East	Mid-lands	North Eng-land	Wales & South West	Scot-land
Unweighted base	784	351	433	58	97	156	168	163	142	268	180	121	215	214	199	189	110	72
Weighted base	777	370	407	96	128	153	146	114	140	216	229	156	177	213	197	187	109	71
Government	184 24%	70 19%	115 28%	15 16%	27 21%	40 26%	34 23%	26 23%	42 30%	30 14%	58 25%	51 33%	45 25%	49 23%	45 23%	46 25%	26 24%	18 25%
Parliament	329 42%	177 48%	152 37%	29 31%	62 48%	60 39%	70 48%	46 41%	61 44%	118 55%	104 46%	55 35%	52 29%	94 44%	83 42%	79 42%	43 39%	30 43%
Both	164 21%	80 22%	85 21%	38 40%	21 17%	34 23%	27 18%	24 21%	20 14%	44 20%	38 17%	34 22%	49 27%	52 24%	44 22%	33 18%	24 22%	11 16%
Neither	72 9%	33 9%	40 10%	8 9%	8 6%	12 8%	13 9%	16 14%	14 10%	12 6%	21 9%	14 9%	26 15%	13 6%	21 11%	19 10%	11 10%	9 12%
Don't know	27 3%	11 3%	15 4%	5 5%	10 7%	6 4%	2 2%	2 1%	3 2%	11 5%	7 3%	3 2%	6 3%	5 2%	4 2%	10 5%	5 5%	2 3%

Poll

CATI Fieldwork : June 4th-5th 2008

Absolutes/col percents

Table 25
Classification
Base: All respondents

	Gender			Age						Social Class				Region				
	Total	Male	Female	18-24	25-34	35-44	45-54	55-64	65+	AB	C1	C2	DE	South East	Mid-lands	North Eng-land	Wales & South West	Scot-land
Unweighted base	1023	461	562	74	122	203	199	215	210	327	235	164	297	268	265	254	146	90
Weighted base	1023	491	532	122	162	203	172	152	213	266	297	215	245	268	268	253	144	90
Gender																		
Male	491 48%	491 100%	- -	47 39%	72 44%	97 48%	91 53%	77 50%	108 51%	137 51%	126 43%	115 53%	113 46%	123 46%	134 50%	126 50%	68 47%	39 44%
Female	532 52%	- -	532 100%	75 61%	91 56%	105 52%	81 47%	75 50%	105 49%	129 49%	170 57%	100 47%	132 54%	145 54%	134 50%	127 50%	76 53%	51 56%
Age																		
18-24	(21) 12%	47 10%	75 14%	122 100%	- -	- -	- -	- -	- -	35 13%	35 12%	29 14%	22 9%	32 12%	37 14%	30 12%	18 13%	4 5%
25-34	(29.5) 16%	72 15%	91 17%	- -	162 100%	- -	- -	- -	- -	53 20%	58 20%	22 10%	30 12%	55 21%	46 17%	26 10%	13 9%	22 24%
35-44	(39.5) 20%	97 20%	105 20%	- -	- -	203 100%	- -	- -	- -	52 20%	70 24%	46 22%	34 14%	62 23%	51 19%	50 20%	26 18%	13 15%
45-54	(49.5) 17%	91 19%	81 15%	- -	- -	- -	172 100%	- -	- -	47 18%	52 18%	48 22%	25 10%	38 14%	43 16%	38 15%	30 20%	24 26%
55-64	(59.5) 15%	77 16%	75 14%	- -	- -	- -	- -	152 100%	- -	37 14%	46 16%	34 16%	34 14%	32 12%	27 10%	51 20%	29 20%	12 13%
65+	(70) 21%	108 22%	105 20%	- -	- -	- -	- -	- -	213 100%	41 15%	35 12%	36 17%	101 41%	48 18%	63 24%	59 23%	27 19%	15 17%
Average age	46.71	47.94	45.58	21.00	29.50	39.50	49.50	59.50	70.00	44.37	43.79	46.50	52.97	44.54	46.06	49.00	48.06	46.52

Poll

CATI Fieldwork : June 4th-5th 2008

Absolutes/col percents

Table 25
Classification
Base: All respondents

	Gender		Age						Social Class				Region					
	Total	Male	Female	18-24	25-34	35-44	45-54	55-64	65+	AB	C1	C2	DE	South East	Mid-lands	North Eng-land	Wales & South West	Scot-land
Weighted base	1023	491	532	122	162	203	172	152	213	266	297	215	245	268	268	253	144	90
<u>Social Class</u>																		
AB	266 26%	137 28%	129 24%	35 29%	53 32%	52 26%	47 28%	37 25%	41 19%	266 100%	-	-	-	86 32%	69 26%	52 20%	41 28%	18 20%
C1	297 29%	126 26%	170 32%	35 29%	58 36%	70 34%	52 30%	46 31%	35 16%	-	297 100%	-	-	90 33%	72 27%	73 29%	39 27%	24 27%
C2	215 21%	115 23%	100 19%	29 24%	22 13%	46 23%	48 28%	34 22%	36 17%	-	-	215 100%	-	36 13%	66 25%	53 21%	34 24%	26 29%
DE	245 24%	113 23%	132 25%	22 18%	30 18%	34 17%	25 14%	34 23%	101 47%	-	-	-	245 100%	56 21%	61 23%	76 30%	30 21%	22 25%
<u>Region</u>																		
North	343 34%	165 34%	178 33%	34 28%	47 29%	63 31%	61 36%	63 41%	74 35%	70 26%	97 33%	79 37%	98 40%	-	-	253 100%	-	90 100%
Midlands	321 31%	159 32%	162 30%	43 35%	48 30%	63 31%	53 31%	40 26%	75 35%	88 33%	82 28%	76 35%	75 31%	-	268 100%	-	53 37%	-
South	359 35%	166 34%	193 36%	45 37%	66 41%	77 38%	58 34%	49 33%	64 30%	108 41%	118 40%	61 28%	72 29%	268 100%	-	-	91 63%	-

Poll

CATI Fieldwork : June 4th-5th 2008

Absolutes/col percents

Table 25
Classification
Base: All respondents

	Gender		Age						Social Class				Region					
	Total	Male	Female	18-24	25-34	35-44	45-54	55-64	65+	AB	C1	C2	DE	South East	Mid-lands	North Eng-land	Wales & South West	Scot-land
Weighted base	1023	491	532	122	162	203	172	152	213	266	297	215	245	268	268	253	144	90
<u>Working status</u>																		
Full-time	461 45%	273 56%	188 35%	51 42%	110 68%	125 62%	103 60%	65 43%	6 3%	153 58%	159 53%	105 49%	43 18%	126 47%	130 48%	102 40%	59 41%	44 49%
Part-time	123 12%	28 6%	95 18%	18 15%	17 11%	38 19%	24 14%	17 11%	8 4%	35 13%	44 15%	28 13%	16 7%	42 16%	22 8%	23 9%	23 16%	12 13%
Not working but seeking work or temporarily unemployed/sick	63 6%	33 7%	30 6%	13 11%	15 9%	16 8%	13 7%	6 4%	- -	8 3%	12 4%	11 5%	33 13%	11 4%	18 7%	18 7%	8 5%	9 10%
Not working/not seeking work	60 6%	11 2%	49 9%	7 6%	8 5%	18 9%	17 10%	10 6%	- -	9 3%	11 4%	12 5%	29 12%	19 7%	12 5%	16 6%	9 6%	5 5%
Retired	253 25%	125 26%	128 24%	- -	- -	- -	9 5%	51 33%	194 91%	50 19%	48 16%	40 19%	116 47%	56 21%	71 26%	75 30%	36 25%	16 17%
Student	43 4%	11 2%	32 6%	31 26%	9 6%	1 1%	1 1%	- -	1 *	7 3%	19 7%	14 6%	3 1%	11 4%	14 5%	11 4%	4 3%	4 4%
Refused	20 2%	10 2%	10 2%	1 1%	2 1%	4 2%	6 4%	3 2%	4 2%	5 2%	5 2%	5 2%	5 2%	3 1%	2 1%	7 3%	6 4%	2 2%

Poll

CATI Fieldwork : June 4th-5th 2008

Absolutes/col percents

Table 25
Classification
Base: All respondents

	Gender			Age						Social Class				Region				
	Total	Male	Female	18-24	25-34	35-44	45-54	55-64	65+	AB	C1	C2	DE	South East	Mid-lands	North Eng-land	Wales & South West	Scot-land
Weighted base	1023	491	532	122	162	203	172	152	213	266	297	215	245	268	268	253	144	90
Tenure																		
Own outright	334 33%	171 35%	163 31%	14 12%	12 8%	26 13%	53 31%	79 52%	150 71%	89 33%	83 28%	73 34%	89 36%	83 31%	97 36%	78 31%	54 38%	22 24%
Own with a mortgage	395 39%	180 37%	215 40%	61 50%	87 54%	115 57%	77 45%	38 25%	17 8%	137 51%	126 43%	95 44%	38 15%	99 37%	106 40%	93 37%	56 39%	41 46%
Council	131 13%	50 10%	82 15%	17 14%	18 11%	27 13%	20 11%	20 13%	29 14%	9 4%	30 10%	18 8%	74 30%	23 9%	31 12%	46 18%	13 9%	17 19%
Housing Assoc.	32 3%	18 4%	15 3%	5 4%	9 5%	5 2%	7 4%	3 2%	3 2%	4 1%	5 2%	7 3%	16 7%	12 4%	7 2%	7 3%	2 2%	4 5%
Rented from someone else	94 9%	52 11%	42 8%	20 17%	29 18%	23 12%	7 4%	6 4%	7 4%	19 7%	42 14%	12 6%	21 8%	42 16%	22 8%	17 7%	11 7%	3 3%
Rent free	7 1%	6 1%	1 *	- -	2 1%	2 1%	1 1%	1 1%	* *	2 1%	2 1%	2 1%	1 *	2 1%	3 1%	* *	* *	1 1%
Refused	29 3%	15 3%	14 3%	4 3%	4 2%	4 2%	7 4%	5 3%	5 2%	6 2%	9 3%	7 3%	7 3%	8 3%	3 1%	10 4%	7 5%	2 2%

Poll

CATI Fieldwork : June 4th-5th 2008

Absolutes/col percents

Table 25
Classification
Base: All respondents

	Gender		Age						Social Class				Region					
	Total	Male	Female	18-24	25-34	35-44	45-54	55-64	65+	AB	C1	C2	DE	South East	Mid-lands	North Eng-land	Wales & South West	Scot-land
Weighted base	1023	491	532	122	162	203	172	152	213	266	297	215	245	268	268	253	144	90
<u>Foreign Holiday in last 3 years</u>																		
Yes	614	291	322	84	109	120	104	90	106	200	190	121	103	175	154	154	80	52
	60%	59%	61%	69%	68%	59%	61%	59%	50%	75%	64%	56%	42%	65%	58%	61%	55%	57%
No	409	200	210	38	53	83	68	62	106	66	106	94	143	93	114	99	65	38
	40%	41%	39%	31%	32%	41%	39%	41%	50%	25%	36%	44%	58%	35%	42%	39%	45%	43%
<u>Number of cars</u>																		
None	213	94	119	22	37	33	24	29	67	36	53	20	103	67	40	61	22	22
	21%	19%	22%	19%	23%	16%	14%	19%	31%	14%	18%	10%	42%	25%	15%	24%	15%	25%
1	425	218	208	42	74	83	63	59	104	89	127	104	105	103	104	115	61	42
	42%	44%	39%	35%	46%	41%	36%	39%	49%	34%	43%	49%	43%	38%	39%	46%	43%	47%
2	294	135	159	27	42	76	62	50	36	101	95	70	29	73	99	57	43	21
	29%	27%	30%	22%	26%	38%	36%	33%	17%	38%	32%	33%	12%	27%	37%	23%	30%	24%
3+	91	44	47	30	9	10	23	13	6	40	23	20	8	25	24	19	18	5
	9%	9%	9%	25%	6%	5%	13%	9%	3%	15%	8%	9%	3%	9%	9%	7%	12%	5%

Poll

CATI Fieldwork : June 4th-5th 2008

Absolutes/col percents

Table 25
Classification
Base: All respondents

	Gender		Age						Social Class				Region					
	Total	Male	Female	18-24	25-34	35-44	45-54	55-64	65+	AB	C1	C2	DE	South East	Mid-lands	North Eng-land	Wales & South West	Scot-land
Weighted base	1023	491	532	122	162	203	172	152	213	266	297	215	245	268	268	253	144	90
Internet Access																		
At all	784 77%	377 77%	407 77%	116 95%	146 90%	181 90%	144 83%	114 75%	83 39%	244 92%	262 88%	162 76%	115 47%	216 81%	207 77%	180 71%	117 81%	64 71%
At home (net)	711 70%	345 70%	366 69%	107 88%	137 85%	168 83%	124 72%	101 66%	74 35%	235 89%	241 81%	141 66%	94 38%	202 75%	187 70%	156 62%	109 75%	57 63%
At work (net)	371 36%	189 39%	182 34%	42 34%	97 60%	100 49%	75 43%	48 32%	9 4%	153 57%	146 49%	53 25%	20 8%	125 47%	101 38%	75 30%	42 29%	29 32%
At home	378 37%	174 35%	204 38%	67 55%	44 27%	76 38%	63 37%	62 41%	65 31%	90 34%	111 37%	101 47%	77 31%	84 31%	99 37%	93 37%	69 48%	33 37%
At work	39 4%	18 4%	20 4%	2 2%	4 3%	8 4%	14 8%	9 6%	1 1%	7 3%	16 5%	12 6%	3 1%	7 3%	13 5%	12 5%	2 2%	5 5%
Both at home and at work	333 33%	171 35%	162 30%	40 33%	93 57%	92 45%	61 35%	39 26%	8 4%	146 55%	130 44%	41 19%	17 7%	118 44%	88 33%	63 25%	40 27%	24 27%
Somewhere else	34 3%	13 3%	21 4%	7 5%	5 3%	5 2%	6 3%	4 3%	8 4%	2 1%	6 2%	9 4%	18 7%	7 2%	8 3%	12 5%	6 4%	2 2%
Not at all	238 23%	114 23%	125 23%	6 5%	16 10%	21 10%	28 16%	38 25%	130 61%	22 8%	34 11%	53 24%	130 53%	51 19%	61 23%	72 29%	27 19%	26 29%
Refused	1 *	1 *	-	-	-	-	1 *	-	-	-	1 *	-	-	1 *	-	-	-	-

Poll

CATI Fieldwork : June 4th-5th 2008

Absolutes/col percents

Table 25
Classification
Base: All respondents

	Gender		Age						Social Class				Region					
	Total	Male	Female	18-24	25-34	35-44	45-54	55-64	65+	AB	C1	C2	DE	South East	Mid-lands	North Eng-land	Wales & South West	Scot-land
Weighted base	1023	491	532	122	162	203	172	152	213	266	297	215	245	268	268	253	144	90
<u>What is the highest educational level that you have achieved to date?</u>																		
Secondary/ high school/ NVQ 1-3	522 51%	219 45%	304 57%	86 71%	56 34%	110 54%	84 49%	76 50%	111 52%	91 34%	151 51%	129 60%	151 61%	109 41%	145 54%	141 56%	76 53%	52 57%
University degree or equivalent professional qualification/ NVQ4	295 29%	161 33%	134 25%	30 25%	72 44%	57 28%	54 32%	41 27%	41 19%	118 44%	98 33%	45 21%	34 14%	100 37%	73 27%	54 21%	44 31%	24 27%
Higher university degree/ Doctorate/ MBA/ NVQ 5 or equivalent	75 7%	40 8%	35 7%	2 2%	25 16%	20 10%	10 6%	7 5%	11 5%	43 16%	23 8%	5 2%	6 2%	35 13%	18 7%	12 5%	9 6%	2 3%
No formal education	109 11%	59 12%	49 9%	3 2%	7 5%	12 6%	19 11%	22 14%	46 22%	9 3%	20 7%	32 15%	47 19%	20 8%	29 11%	37 14%	11 8%	11 12%
None of these	3 *	1 *	3 *	- -	- -	1 *	- -	1 1%	1 1%	1 *	1 *	- -	2 1%	1 *	- -	2 1%	1 *	- -
Refused	18 2%	11 2%	8 1%	1 1%	2 1%	3 1%	5 3%	5 3%	3 1%	5 2%	4 1%	4 2%	6 2%	3 1%	3 1%	8 3%	3 2%	1 1%

Poll

CATI Fieldwork : June 4th-5th 2008

Absolutes/col percents

Table 25
Classification
Base: All respondents

	Gender		Age						Social Class				Region					
	Total	Male	Female	18-24	25-34	35-44	45-54	55-64	65+	AB	C1	C2	DE	South East	Mid-lands	North Eng-land	Wales & South West	Scot-land
Weighted base	1023	491	532	122	162	203	172	152	213	266	297	215	245	268	268	253	144	90
Marital Status																		
Single	242 24%	128 26%	114 21%	86 71%	55 34%	39 19%	30 18%	12 8%	20 9%	57 22%	65 22%	50 23%	69 28%	63 24%	76 28%	50 20%	29 20%	23 26%
Married/ co-habiting	556 54%	263 54%	293 55%	32 26%	101 62%	125 62%	110 64%	94 62%	94 44%	174 66%	159 54%	127 59%	95 39%	141 53%	144 54%	143 57%	77 53%	51 56%
Widowed/ separated/ divorced	202 20%	87 18%	116 22%	- -	4 2%	33 16%	26 15%	44 29%	95 45%	29 11%	63 21%	32 15%	77 32%	56 21%	46 17%	53 21%	33 23%	15 16%
Refused	23 2%	13 3%	10 2%	4 3%	2 1%	5 3%	6 3%	2 2%	4 2%	5 2%	9 3%	5 2%	4 2%	8 3%	2 1%	6 3%	5 4%	2 2%
Children																		
None aged 18 or under	695 68%	357 73%	339 64%	95 78%	87 54%	58 28%	113 66%	136 90%	207 97%	166 62%	189 64%	150 70%	190 78%	179 67%	187 70%	172 68%	102 71%	55 61%
NET: Yes	305 30%	124 25%	181 34%	26 21%	73 45%	139 68%	52 30%	13 9%	2 1%	93 35%	102 34%	59 28%	50 20%	83 31%	79 29%	73 29%	37 26%	33 37%
NET: Yes any aged 15 or under	274 27%	109 22%	165 31%	25 20%	73 45%	128 63%	40 23%	7 5%	2 1%	86 32%	91 31%	51 24%	46 19%	76 28%	73 27%	66 26%	28 19%	31 34%
- Aged under 5	113 11%	40 8%	73 14%	20 17%	52 32%	34 17%	4 2%	- -	2 1%	42 16%	22 8%	26 12%	22 9%	35 13%	29 11%	25 10%	11 7%	13 14%
- Aged 5-10	132 13%	55 11%	77 15%	5 4%	32 19%	76 37%	17 10%	2 1%	2 1%	39 15%	41 14%	31 15%	21 9%	33 12%	37 14%	33 13%	8 6%	21 23%
- Aged 11-15	128 13%	57 12%	71 13%	3 2%	12 7%	81 40%	27 16%	5 4%	- -	36 13%	53 18%	20 9%	19 8%	31 12%	36 13%	36 14%	17 11%	8 9%
- Aged 16-18	67 7%	32 7%	35 7%	3 2%	3 2%	30 15%	24 14%	8 5%	- -	13 5%	30 10%	15 7%	9 4%	19 7%	16 6%	16 6%	12 9%	4 4%
Refused	23 2%	11 2%	12 2%	1 1%	2 1%	6 3%	7 4%	2 2%	4 2%	7 3%	5 2%	5 2%	5 2%	6 2%	3 1%	7 3%	5 4%	2 2%

Poll
CATI Fieldwork : June 4th-5th 2008

Absolutes/col percents

Table 25
Classification
Base: All respondents

	Gender		Age						Social Class				Region					
	Total	Male	Female	18-24	25-34	35-44	45-54	55-64	65+	AB	C1	C2	DE	South East	Mid-lands	North Eng-land	Wales & South West	Scot-land
Weighted base	1023	491	532	122	162	203	172	152	213	266	297	215	245	268	268	253	144	90
<u>Grocery shopping status</u>																		
Yes - do half or more	792	323	469	66	140	156	143	118	170	191	240	151	210	217	206	192	104	73
	77%	66%	88%	54%	86%	77%	83%	78%	80%	72%	81%	70%	86%	81%	77%	76%	72%	82%
No - do less than half	220	164	57	55	21	46	27	31	41	71	55	62	33	49	59	59	38	15
	22%	33%	11%	45%	13%	23%	15%	21%	19%	27%	19%	29%	13%	18%	22%	23%	26%	17%
Refused	10	4	6	1	1	1	3	2	2	4	2	2	3	3	3	2	2	1
	1%	1%	1%	1%	*	1%	2%	1%	1%	2%	1%	1%	1%	1%	1%	1%	1%	1%